

QR CODER FOR DENSO



Separate device for greater reliability

WHY ?

ADVANTAGES

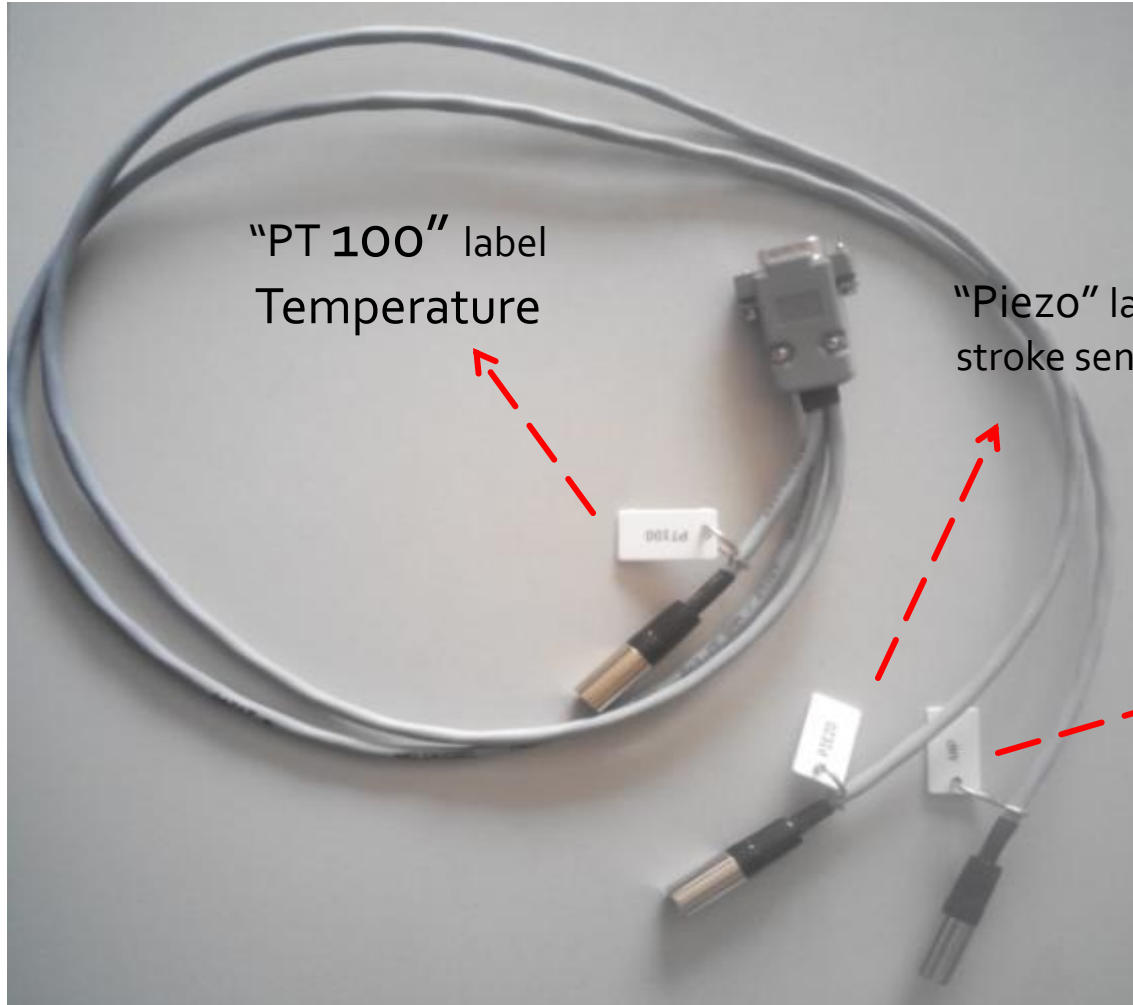


Cool down cycle to decrease injector temperature to obtain the best injector coding performance and reliability because when temperature change injector behaviour change too with impact on injector coding

Up today response time is not on injector coding but you can include it giving highest injector coding reliability

Injector coding is run in hardware with different and complex algorithms

CABLE "DB9," TO CONNECT TO QR CODER

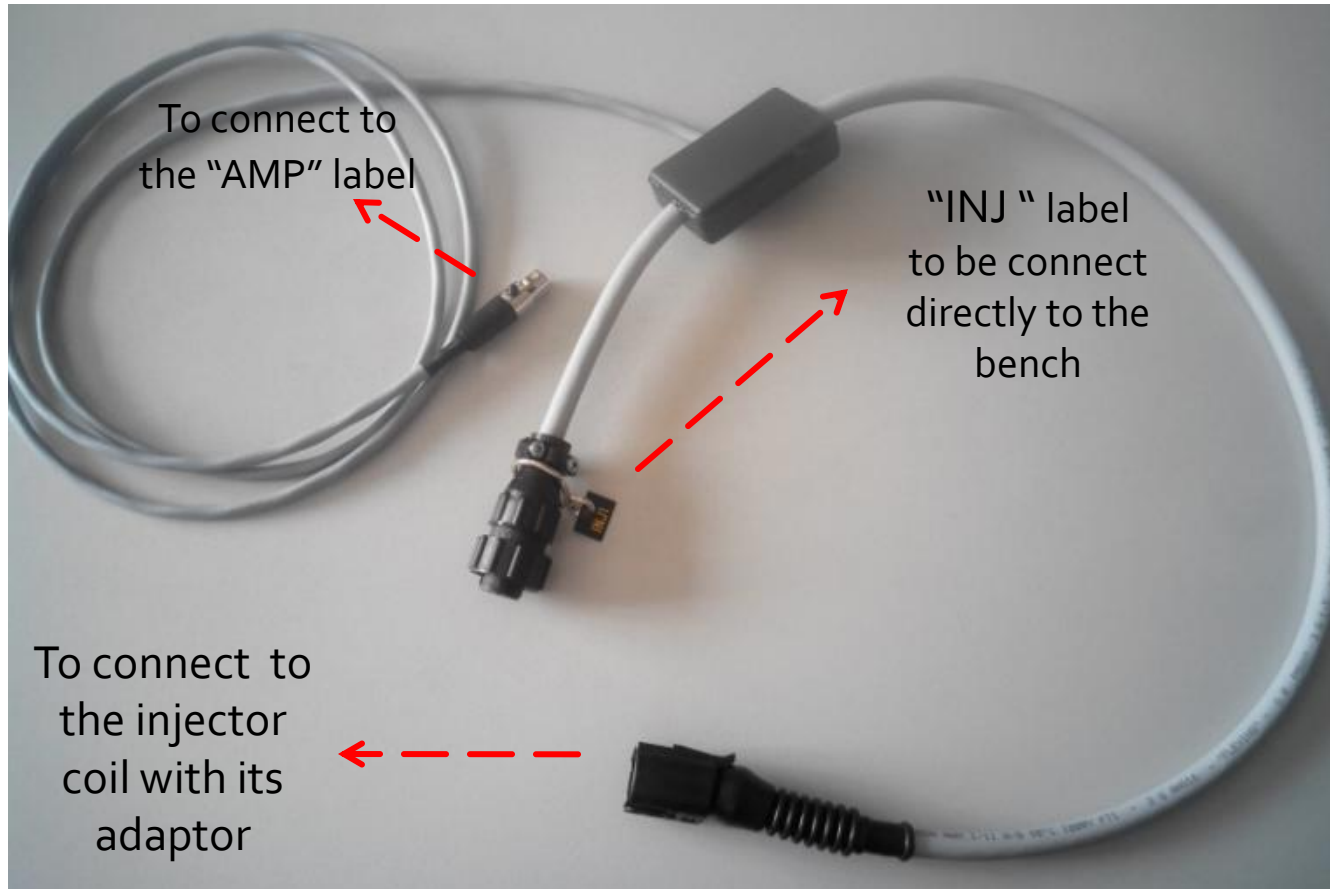


"PT 100" label
Temperature

"Piezo" label
stroke sensor

"AMP" label
Current Sensor

CURRENT SENSOR



TEMPERATURE SENSOR



Back flow from injector

To connect "PT100" label



Back flow to the bench

STROKE SENSOR



To connect
on "Piezo"
label

